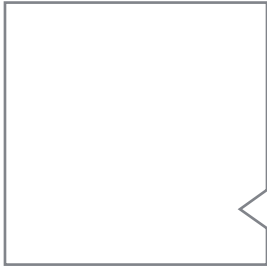




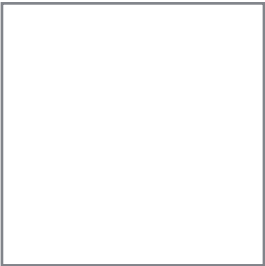
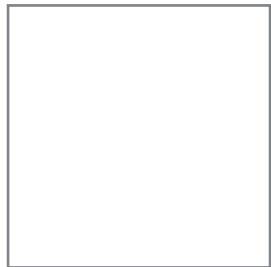
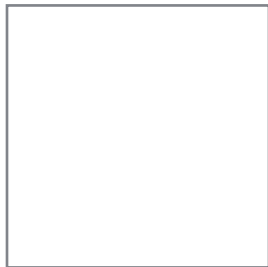
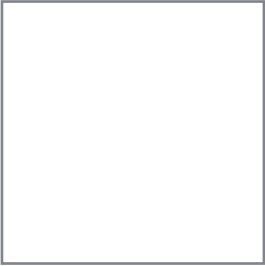
CLEAN WATER GROUP






AquaMatic

Pentair Water



Application date 01/01/2010

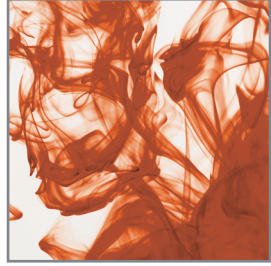
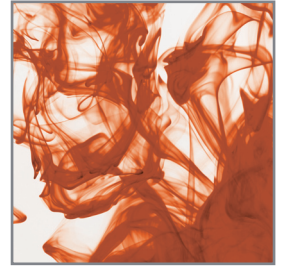


Table of contents



Product Descriptions	4
V42 Series	5
VAV Series	8
V46 Series	9
V46 Series	10
K52 Series	11
K55 Series	12
Union end Connectors for K52 and K55 Series Composite Valves	14
Grooved Adapters for K52 and K55 Series	15
Threaded Adapters for K52 and K55 Series Composite Valves	16
K53 Series	17
Female Socket Weld Connectors for K53 Series Composite Valves	19
48 Series	20
51 Series	21
58 & 59 Series	22
962 Series	23
Pvc Injectors	24
3-Way Solenoid Valves	24
Repair Kits	25
Individual Parts Prices	33
Warranty conditions for Pentair Water Europe products	54

PRODUCT DESCRIPTIONS

GE Water Technologies has designed this AquaMatic® Products price list to be a complete and easy to use product guide. The products in Section 1 are made per specific order requests. Section 2 contains repair parts kits. Section 3 contains individual parts subject to minimum quantity requirements.

V42 Series - Cast Iron Diaphragm Valves

The V42 series is our traditional cast iron, diaphragm-operated, two-way valve. It was originally designed for use in water pre-treating equipment but is now utilized in many other applications to control the flow of air, water, and other fluids and materials. The body and cap are cast iron. Internal metal parts are brass and stainless steel. Rubber components are Buna-N. Valves are rated to a maximum working pressure of 125 psi (8.5 bar) and maximum temperature of 150°F (65 °C). Build-to-order valves range in size from ¾" to 6". Normal cycle life is a minimum of 50000 cycles. Options available include brass body and cap, fluorocarbon diaphragm and seals, limit stop, position indicator, and more.

V46 Series - Stainless Steel Diaphragm Valves

The V46 series is similar to the V42 series in operation. Valve body and caps and all metal internal parts are made out of 316 stainless steel alloy and are passivated for maximum corrosion resistance. Valves are available in pipe sizes 1", 1 ½", and 2", in threaded and flanged end connections. Standard seals are Buna rubber and optionally EP or FKM seals are available for high temperature service. Fabric reinforced formed diaphragms are available in Buna N material (standard) or FKM for high temperature service. Maximum working pressure on the threaded valves is 250 PSI (17 bar) and on flanged valves 150 PSI (10.2 bar).

Vav Series - Cast Iron Diaphragm Valves For High Cycle Applications

The VAV Series is similar to the V42 series and share cast iron bodies and caps. The VAV Series has been enhanced to allow a longer cycle life by a seating disk material of 90 durometer and Aflas dynamic O-rings. Valves of 2" pipe size and larger offer stainless steel diaphragm plates for added strength, and double Orings on the shaft for better stability. Expected cycle life of a VAV Series valve with Buna-N diaphragm is 200000 cycles. Replacement of all rubber components should be part of a regular maintenance program conducted at 200000 cycles or less. Typical applications include inlet and exhaust valves on heatless regenerative air dryers and sand blasting air inlet valves.

K52 Series - Composite Diaphragm Valves

The K52 series is designed to control the flow of de-ionized water, corrosive fluids, caustics and acids. Line fluid never contacts a corrodible surface. The body and cap are molded of black glass reinforced Noryl thermoplastic resin. The diaphragm is Buna-N and seals are ethylene propylene. Valves are available in 4 body sizes: ½", 1", 1 ½", and 2 ½". Valves are available with a variety of end connections. Maximum working pressure is 125 psi (8.5 bar), and maximum temperature is 140 °F (60 °C).

K55 Series - Composite Isolated Bonnet Valves

The K55 series is a diaphragm-operated isolated bonnet valve designed to protect the operating diaphragm from abnormal deterioration caused by leaking corrosive fluid from the process line into the control area. The body and caps are molded of black glass reinforced Noryl thermoplastic resin. Seals are ethylene propylene and diaphragm is Buna-N. These valves are rated to a maximum of 125 psi (8.5 bar) and maximum temperature of 140 °F (60 °C). These valves are available in sizes from ½" through 2".

K53 Series - Composite Diaphragm Valves

The K53 series incorporates the critical features of the K52 series and improves performance. A double O-ring design on the shaft eliminates the possibility of contamination of the process and control fluids. The K53 cap on the valve now threads directly onto the body, making assembly and disassembly for service much simpler. K53 series valves have a high lift poppet design for flow capabilities at least 20 % greater than the K52 series. Body sizes available are 1", 1 ½", 2" and 3". Maximum working pressure is 125 psi (8.5 bar), and maximum temperature is 140 °F (60 °C).

Stager Valves

AquaMatic® stagers are rotary pilot valves with multiple ports for directing fluid flows to operate various diaphragm valves installed in a process system. AquaMatic® stager internal parts are constructed of durable, noncorroding, self-lubricating material for long, maintenance-free life. Maximum working pressure is 125 psi (17 bar), and maximum temperature is 140 °F (60 °C).

Model Number	Body Material	Number of Ports	Typical Applications
48	Brass	6	Filter and softeners
51	Brass	8	More complex softeners and sequential filter systems
58	PVC	16	Twin alternation systems, de-ionizers and sequential filter systems

V42 SERIES

CAST IRON AND BRASS VALVE MODEL NUMBER SELECTION

Pipe Connections

- 0 = Female NPT
- 1 = Female BSP
- 3 = Flanged ASTM
- 4 = Flanged Metric (ISO)

V42

?

?

Pipe Size (Model)

- B = ¾" (421)
- C = 1" (421)
- D = 1" ¼ (424)
- E = 1" ½ (424)
- F = 2" (425)
- G = 2" (426)
- H = 2" ½ (426)
- J = 3" (427)
- K = 4" (428)
- L = 6" (429)

Body & Cap Material

- 0 = Cast Iron
- 1 = Cast Brass

?

??

Valve Options

- 00 = NO
- 01 = NO, SAO
- 02 = NO, SAC
- 10 = NO, LS
- 11 = NO, LS, SAO
- 21 = NO, PI, SAO
- 30 = NC
- 32 = NC, SAC
- 40 = NC, LS

Internal Parts

- 0 = Brass, Stainless Steel
- 3 = Stainless Steel

?

?

Seals/Diaphragm/Disk (Kit suffix)

- 0 = Buna/Buna/Buna (RA)
- 1 = EP/Buna/EP (RAE)
- 2 = FKM/FKM /FKM (RAV)
- 4 = EP/FKM/EP (RAEFV)
- 5 = FKM/Buna/FKM (RAVFB)
- 7 = Buna/Buna/Hycar

Float Option (Old Model)

- 0 = None
- A = Powered closed at high level (AM3000)
- B = Powered closed at high level, powered open (AM3010)
- C = Powered closed at low level (AM3011)
- D = Powered closed at low level, powered open (AM3012)
- E = Same as B except with brine float (AM3010B)
- X = Replacement valve only (including spacer)

?

?

Drill and Tap Bosses

- 0 = None
- 1 = Boss #1
- 2 = Boss #2
- 3 = Boss #3
- 4 = Boss #4
- 5 = Bosses #1,2,3,4
- 6 = Bosses #1,2
- 7 = Bosses #1,3
- 8 = Bosses #2,4
- A = Bosses #2,3

Float Features

- 0 = 36" Brass Float Rod
- L = 36" PVC Float Rod
- M = 36" SS Float Rod
- N = 54" Brass Float Rod
- P = 54" SS Float Rod
- X = Less Float & Rod

?

Solenoid Option (Old Model)

- 0 = None
- 1 = EO (AM3500)
- 2 = EC (AM3510)
- 3 = IP (AM3511)
- 4 = EO, DD
- 5 = EC, DD

Abbreviations

ASTM	American Standard
BSP	British standard pipe
DD	Dry drain option
EC	Energize to close
EO	Energize to open
EP	Ethylene propylene
FKM	Fluorocarbon
IP	Independent pressure
ISO	Industrial Standards Organization
JIS	Japanese Industrial Standard
LS	Limit Stop option
NC	Normally closed
NEMA	Enclosure standard
NO	Normally open
NPT	National Pipe – Tapered Standard
PI	Position indicator
SAC	Spring assist closed
SAO	Spring assist open

Solenoid Features

- 0 = None
- NEMA 1
- 1 = 115V/60 Hz
- 2 = 220V/50 Hz
- 3 = 24V/60 Hz
- A = 24VDC
- B = 12VDC
- NEMA 4,7,9
- 4 = 115V/60 Hz
- 5 = 220V/50 Hz
- 6 = 24V/60 Hz
- C = 24VDC

V42 SERIES

CAST IRON AND BRASS VALVE

Prices in Euro

Pipe Sizes in inches	¾" 421 V42B	1" 421 V42C	1" ¼ 424 V42D	1" ½ 424 V42E	2" 425 V42F	2" 426 V42G	2" ½ 426 V42H	3" 427 V42J Threaded	3" 427 V42J Flanged	4" 428 V42K Flanged	6" 429 V42L Flanged
----------------------	-------------------	-------------------	---------------------	---------------------	-------------------	-------------------	---------------------	----------------------------	---------------------------	---------------------------	---------------------------

Basic Valve,
Normally Open with
Buna Seals and
Diaphragm

Options (add to Basic Valve)

Brass Body and
Cap

Normally Closed

Spring Assist Open

Spring Assist
Closed ⁽¹⁾

Limit Stop ⁽¹⁾

Position Indicator
with SAO ⁽²⁾

Stainless Steel
Internals ⁽³⁾

EP Seals/Buna
Diaphragm/EP Disk

EP Seals/FKM
Diaphragm/EP Disk

FKM Seals/Buna
Diaphragm/FKM
Disk

FKM Seals/FKM
Diaphragm/FKM
Disk

Buna Seals/Buna
Diaphragm/Hycar
Disk

¼" NPT Boss
Drilled and Tapped
(Price/Boss)

(1) Limit stop and spring assist closed functions cannot be combined.

(2) Not available with Limit Stop or Spring Assist Close.

(3) Add € for spring assist closed function.

(4) Not Available.

(5) Refer to stainless steel valves, Section I, page 9.

SPECIAL FEATURE ADDERS FOR V42 SERIES

CAST IRON & BRASS VALVES

Solenoid Options

Solenoid controlled valves are provided with a 3-way, 120 VAC/60 Hz, UL/CSA pilot solenoid assembled to a Normally Open Valves, with necessary tubing and fittings. Valves are rated at maximum working pressure of 125 psi (8.6 bar) and maximum temperature of 150 °F (65 °C).

Designate

- Option 1 - Energize to open (normally closed) operation
- Option 2 - Energize to close (normally open) operation
- Option 3 - Independent pressure supply

Solenoid Option prices are

¾" thru 2 ½" valve	Add €
3" and 4" valve	Add €
6" valve	Add €

Additional features

220 VAC or 24 VAC	Add €
12 VDC or 24 VDC	Add €
Dry drain option	Add €
Independent pressure	Add €
NEMA 4, 7, 9 Explosion Proof option	Add €

Float Options

Float valves are normally open valves provided with a level control (348LC) mounted directly, including control pilot, polystyrene float, and 36" brass float rod. Valves are rated to a maximum working pressure of 125 psi (8.6 bar) and maximum temperature of 140 °F (60 °C).

Prices are:

¾" thru 4" valve	Add €
6" valve	Add €

Float Options

Option A - Powered closed at high float position	No Charge
Option B - Powered open and closed, closes at high position	Add €
Option C - Powered closed at low float position	Add €
Option D - Powered open and closed, closes at low position	Add €
Option E - Same as option B except with brine float	Add €

Float & Rod Options

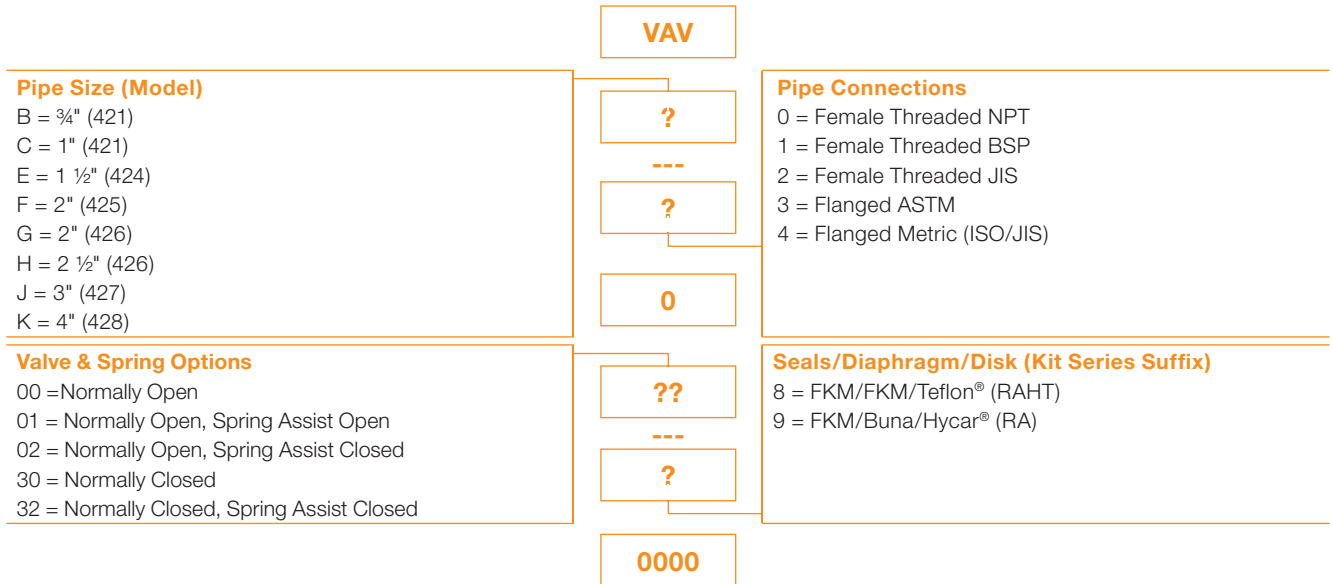
Extra 18" Brass Float rod	Add €
Extra 18" Stainless Steel Float rod	Add €
PVC float rod (polystyrene 36" standard float)	Add €
Stainless steel float and rod (36" standard)	Add €

Stand Alone Components (Replacement Components)

348LC level control assembly, Std (36" float rod)	€
348LCK level control Assembly (54" float rod)	€
348LCB brine level control Assembly (36" Float rod)	€
348LCP level control Assembly (36" PVC float rod)	€
348LCS level control Assembly (36" SS Rod & Float)	€
348-DD mounting bracket	€

VAV SERIES

HIGH CYCLE CAST IRON AIR VALVE MODEL NUMBER SELECTION



VAV SERIES

HIGH CYCLE CAST IRON AIR VALVE

Prices in Euro

Pipe Sizes in inches	¾" & 1" 421	1 ½" 424	2" 425	2" 426	2" ½ 426	3" 427 Threaded	3" 427 Flanged	4" 428 Flanged
----------------------	----------------	----------	--------	--------	----------	--------------------	-------------------	-------------------

Basic Valve, Normally Open with Buna Diaphragm, Hycar® Disk, Aflas® Dynamic O-rings, and FKM Static O-rings

Options (add to Basic Valve)

Normally Closed

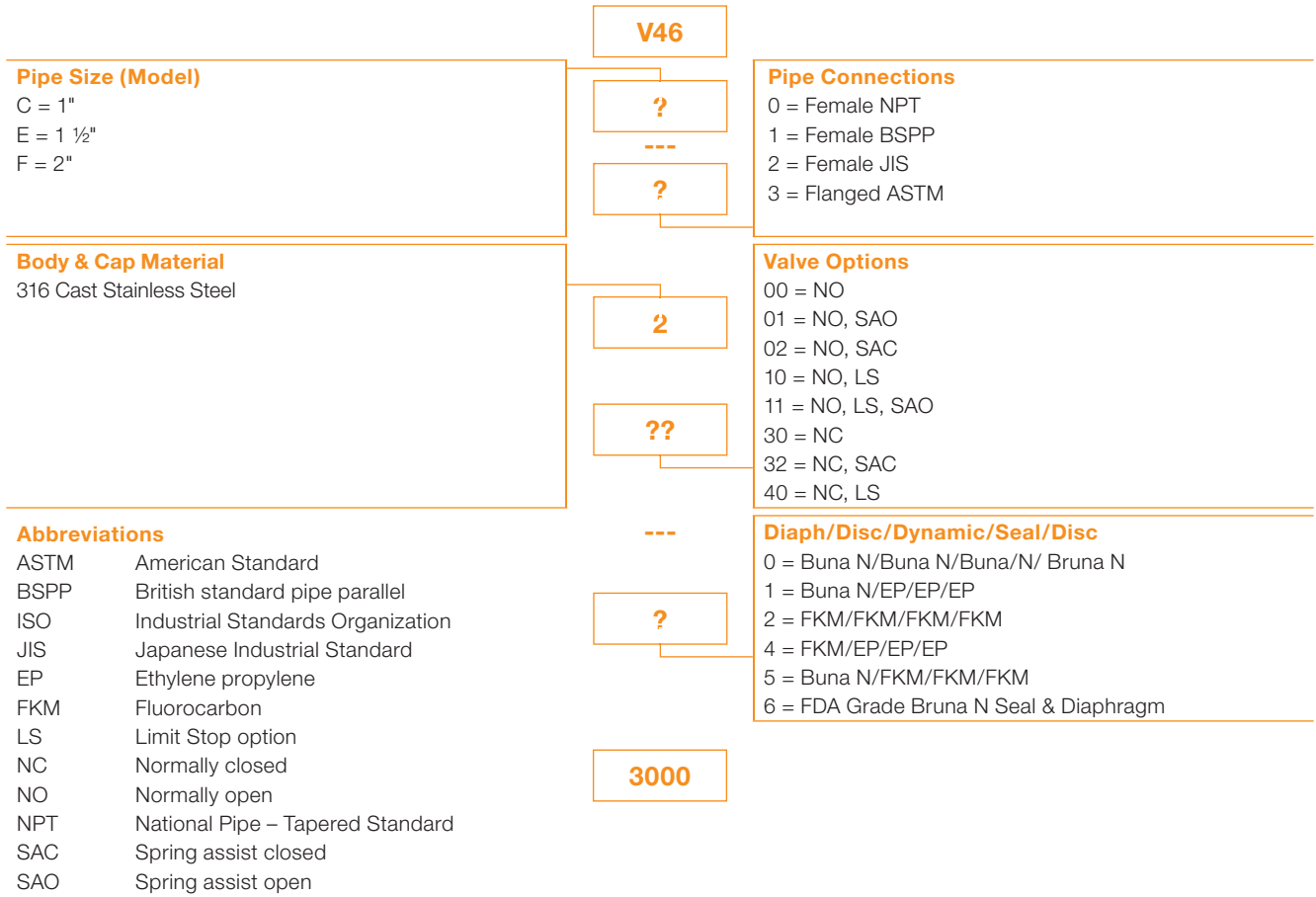
Spring Assist Open

Spring Assist Closed

FKM Seals/FKM Diaphragm/Teflon® Disk

V46 SERIES

STAINLESS STEEL VALVE MODEL NUMBER SELECTION



V46 SERIES

STAINLESS STEEL VALVE

Prices in Euro

Pipe Sizes in inches	1" V46C Flgd.	1 ½" V46E Flgd.	2" V46F Flgd.	1" V46C Thd.	1 ½" V46E Thd.	2" V46F Thd.
----------------------	---------------	-----------------	---------------	--------------	----------------	--------------

Basic Valve, Normally Open with Buna Seals and Diaphragm

List for Options (add to Basic Valve)

Normally Closed

Spring Assist Open

Spring Assist Closed ⁽¹⁾

Limit Stop ⁽¹⁾

(Adder for Elastomer Material)

List for Options (add to Basic Valve)

Option 1 Buna N/EP/EP/EP

Option 2 FKM/FKM/FKM/FKM

Option 4 FKM/EP/EP/EP

Option 5 Buna N/FKM/FKM/FKM

Option 6 FDA Grade Buna N Seal & Diaph

⁽¹⁾ Limit stop and spring assist closed functions cannot be combined.

K52 SERIES

COMPOSITE VALVE MODEL NUMBER SELECTION

1/2" to 2 1/2" Basic Valves less Adapters

See page 14 for selecting union ends with female socket connectors (1/2" through 1 1/2") See page 15 for selecting grooved adapters and retaining ring hardware (1/2" through 1 1/2") See page 16 for selecting socket weld and threaded adapters (2" through 3")

K52		
Body Size (Model) 0 = 1/2" (520) 1 = 1" (521) 4 = 1 1/2" (524) 6 = 2 1/2" (526)	? --- X2 ?? ---	Valve Options 00 = NO 01 = NO, SAO 02 = NO, SAC 10 = NO, LS 11 = NO, LS, SAO 12 = NO, LS, SAC 21 = NO, PI, SAO 30 = NC 31 = NC, SAO 32 = NC, SAC 42 = NC, LS, SAC B2 = XNC, SAC
Seals/Diaphragm/Disk (Kit Series Suffix) 1 = EP/Buna/EP (RA) 2 = FKM/FKM/FKM* 5 = FKM/Buna/FKM (RAV) 6 = Butyl/Buna/Butyl (RAJ) * Not available on series 526 valves.	? 4 ?	Drill and Tap Bosses 0 =None 1 =Boss #1 2 = Boss #2 3 = Boss #3 4 = Boss #4 6 = Bosses #1, 2
Solenoid Option (Old Model) 0 = None 1 = EO 2 = EC 3 = IP 4 = EO, DD 5 = EC, DD	? ?	Solenoid Features 0 = None D = 115V/60 Hz, NEMA 4 E = 220V/50 Hz, NEMA 4 F = 24V/60 Hz, NEMA 4

Abbreviations

DD	Dry drain option
EC	Energize to close
EO	Energize to open
EP	Ethylene propylene
FKM	Fluorocarbon
IP	Independent pressure
LS	Limit Stop option
NC	Normally closed
NEMA	Enclosure standard
NO	Normally open
PI	Position indicator
SAC	Spring assist closed
SAO	Spring assist open
XNC	Externally normally closed

K52 SERIES

COMPOSITE VALVE LIST PRICES

1/2" to 2 1/2" Basic Valves less Adapters

See page 14 for selecting union ends with female socket connectors (1/2" through 1 1/2") See page 15 for selecting grooved adapters and retaining ring hardware (1/2" through 1 1/2") See page 16 for selecting socket weld and threaded adapters (2" through 3")

Prices in Euro

Pipe Sizes in inches	1/2" - 520	1" - 521	1 1/2" - 524	2 1/2" - 526
Basic Valve, Normally Open with EP Seals and Buna Diaphragm				
List Prices for Options (add to Basic Valve Price)				
Normally Closed ⁽¹⁾				
Spring Assist Open				
Spring Assist Closed ⁽¹⁾				
Limit Stop				
Position Indicator with SAO				
FKM Seals/Buna Diaphragm/FKM Disk				
Butyl Seals/Buna Diaphragm/Butyl Disk				
3-way, Solenoid Valve integrally mounted, ⁽⁴⁾				
Dry Drain Option for solenoid valve				
Independent Pressure Option for solenoid valve				
Boss Drilled and Tapped (Price/Boss) 1/8" NPT (except 526 is 1/4"NPT)				
FKM Seals/FKM Diaphragm/FKM Disk				

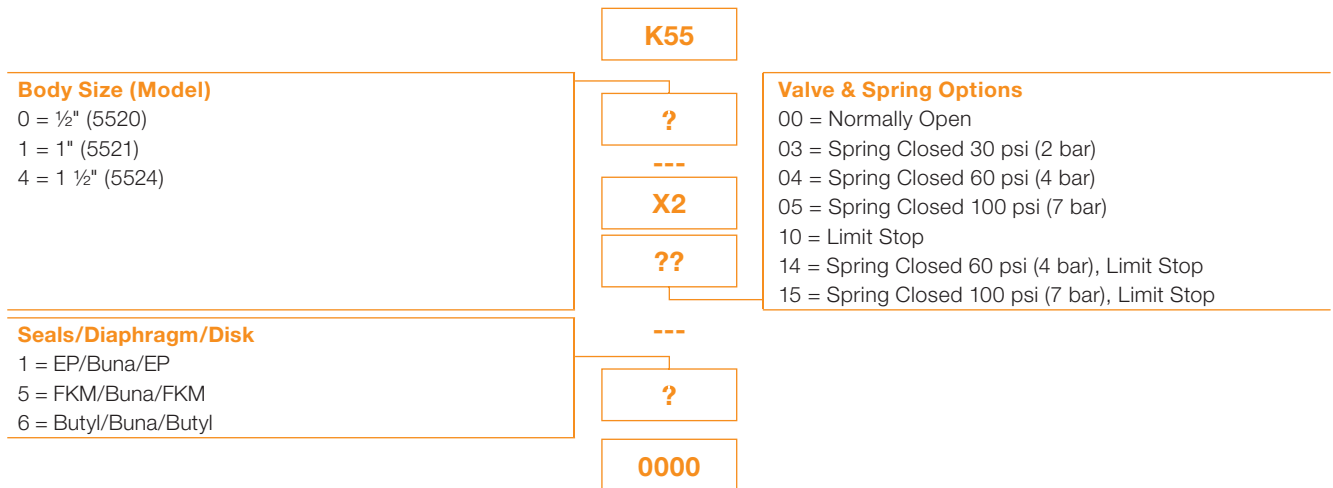
(1) Normally Closed and Spring Assist Closed cannot be combined on 1/2" valves. Use Spring Assist Closed and Externally Normally Closed. ADD € for Externally Normally Closed option. (2) Position Indicator not available with Normally Closed or Limit Stop Options. (3) Not Available. (4) Solenoid are assembled on Normally Open Valves only.

K55 SERIES

COMPOSITE ISOLATED BONNET VALVE MODEL NUMBER SELECTION

1/2" to 2 1/2" Basic Valves less Adapters

See page 14 for selecting union ends with female socket connectors (1/2" through 1 1/2") See page 15 for selecting grooved adapters and retaining ring hardware (1/2" through 1 1/2") See page 16 for selecting socket weld and threaded adapters (2" through 3")



K55 SERIES

HIGH CYCLE CAST IRON AIR VALVE

Prices in Euro

Pipe Size in inches	1/2"	1"	1 1/2"
Basic Valve, Normally Open with EP Seals and Buna Diaphragm			
List Prices for Options (add to Basic Valve Price)			
Limit Stop			
Fail Safe Spring Close, 30, 60 or 100 psi (2, 4, or 7 bar)			
FKM Seals and Disk/Buna Diaphragm/OR Butyl Seals and Disk/Buna Diaphragm			

UNION END CONNECTORS

FOR K52 AND K55 SERIES COMPOSITE VALVES

Union end connections featuring female socket weld adapters are available in ASTM (American), ISO (Metric) or JIS (Japanese) pipe standards. These adapters are designed to have PVC pipe glued directly into them and are available with seal options of EP (ethylene propylene), FKM, or Butyl. Union end connector kits consist of 2 each of the sockets and connecting hardware. One kit is needed per valve.

Model Number	Part Number	Kit Description
--------------	-------------	-----------------

PVC Union End Connector Kits for 520 and 5520 Valve Body

K520100	1070184	½" ASTM, EP Seals
K520101	1070185	½" ASTM, Butyl Seals
K520102	1070186	½" ASTM, FKM Seals
K520103	1070190	15 mm ISO, EP Seals
K520104	1070191	15 mm ISO, Butyl Seals
K520105	1070192	15 mm ISO, FKM Seals
K520106	1070193	15 mm JIS, EP Seals
K520107	1070194	15 mm JIS, Butyl Seals
K520108	1070195	15 mm JIS, FKM Seals

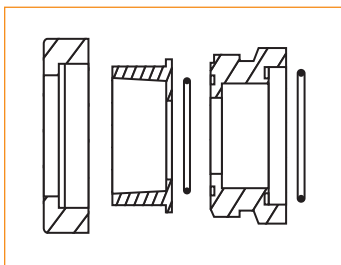
PVC Union End Connector Kits for 521 and 5521 Valve Body

K521100	1070202	1" ASTM, EP Seals
K521101	1071153	1" ASTM, Butyl Seals
K521102	1071154	1" ASTM, FKM Seals
K521103	1070204A	25 mm ISO, EP Seals
K521104	1071155	25 mm ISO, Butyl Seals
K521105	1071156	25 mm ISO, FKM Seals
K521106	1070205	25 mm JIS, EP Seals
K521107	1071157	25 mm JIS, Butyl Seals
K521108	1071158	25 mm JIS, FKM Seals

PVC Union End Connector Kits for 524 and 5524 Valve Body

K524100	1070208	1 ½" ASTM, EP Seals
K524101	1071220	1 ½" ASTM, Butyl Seals
K524102	1070209	1 ½" ASTM, FKM Seals
K524103	1070212	40 mm ISO, EP Seals
K524104	1071221	40 mm ISO, Butyl Seals
K524105	1071220	40 mm ISO, FKM Seals
K524106	1070214	40 mm JIS, EP Seals
K524107	1071222	40 mm JIS, Butyl Seals
K524108	1070215	40 mm JIS, FKM Seals

Union End Connector



GROOVED ADAPTERS

FOR K52 AND K55 SERIES

Composite valves may be utilized with grooved adapters, which are available with male pipe threads, male socket weld, or female pipe threads. A grooved adapter kit includes 2 each of the grooved adapters. It is also necessary to specify the appropriate hardware kit containing two each of the retaining ring, retaining nut, and o-ring when using grooved adapters.

Hardware Kit consisting of 2 Retaining Rings, 2 Retaining Nuts, and 2 O-rings

Model Number	Part Number	Kit Description		Hardware Kit
--------------	-------------	-----------------	--	--------------

Hardware Kit for 520 and 5520 Valves

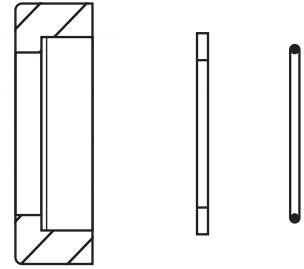
K520109	1070238	EP O-ring
K520110	1070239	Butyl O-ring
K520111	1070240	FKM O-ring

Hardware Kit for 521 and 5521 Valves

K521109	1070244	EP O-ring
K521110	1071159	Butyl O-ring
K521111	1071160	FKM O-ring

Hardware Kit for 524 and 5524 Valves

K524109	1070246	EP O-ring
K524110	1071223	Butyl O-ring
K524111	1070247	FKM O-ring

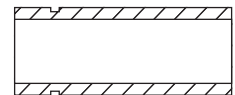


Grooved Adapter Kits

Model Number	Part Number	Kit Description		Hardware Kit
--------------	-------------	-----------------	--	--------------

PVC Grooved Adapter Kits for 520 and 5520 Valves

K520-PC	1070220	½", Male Socket Weld	0	Male Socket Weld
K520-P	1070221	½", Male Pipe Thread NPT		
K520-PA	1070222	¾", Female Pipe Thread NPT		
K520-PE	1071057	15 mm, Male Socket Weld, ISO		



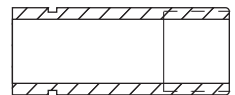
PVC Grooved Adapter Kits for 521 and 5521 Valves

K521-PC	1070226	1", Male Socket Weld	0	Male Pipe Thread
K521-P	1070227	1", Male Pipe Thread NPT		
K521-PA	1070228	¾", Female Pipe Thread NPT		
K521-PE	1071091	25 mm, Male Socket Weld, ISO		



PVC Grooved Adapter Kits for 524 and 5524 Valves

K524-PC	1070232	1 ½", Male Socket Weld	0	Female Pipe Thread
K524-P	1070233	1 ½", Male Pipe Thread NPT		
K524-PA	1070234	1 ¼", Female Pipe Thread NPT		
K524-PE	1071162	40 mm, Male Socket Weld, ISO		



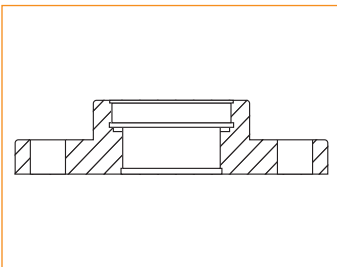
THREADED ADAPTERS

FOR K52 AND K55 SERIES COMPOSITE VALVES

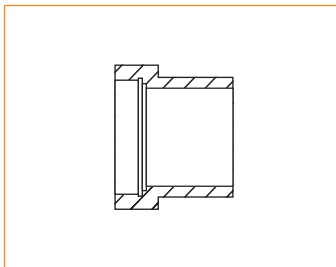
These adapters thread directly onto the valve and are equipped with either flanged ends, male socket ends, or female socket ends. Threaded adapters are available for the 524 (1 1/2") and 526 (2 1/2") valve bodies. One adapter kit is required per valve, and an adapter kit includes 2 threaded adapters.

Model Number	Part Number	Kit Description
PVC Flange Adapter Kits with EP O-rings		
K524-V	1070250	2", Flange Adapters
K526-L	1070251	2 1/2", Flange Adapters
K526-T	1070252	3", Flange Adapters
PVC Female Socket Adapter Kits with EP O-rings		
K524-UF08UEP	1070256	2", ASTM
K526-UF10UEP	1070257	2 1/2", ASTM
K524-UF50MEP	1070260	50 mm, ISO
K526-UF65MEP	1070261	65 mm, ISO
K524-UF50JEP	1071165	50 mm, JIS
K526-UF65JEP	1076600	65 mm, JIS
PVC Male Socket Adapter Kits with EP O-rings		
K524-UM08UEP	1070264	2", ASTM
K526-UM10UEP	1070265	2 1/2", ASTM
K524-UM50MEP	1070268	50 mm, ISO
K526-UM65MEP	1070269	65 mm, ISO

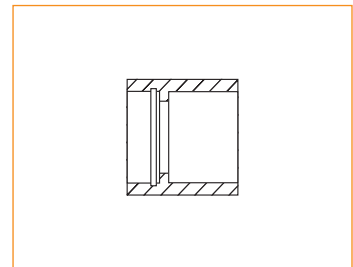
Flange Adapter



Male Socket Weld



Female Socket Weld



Abbreviations

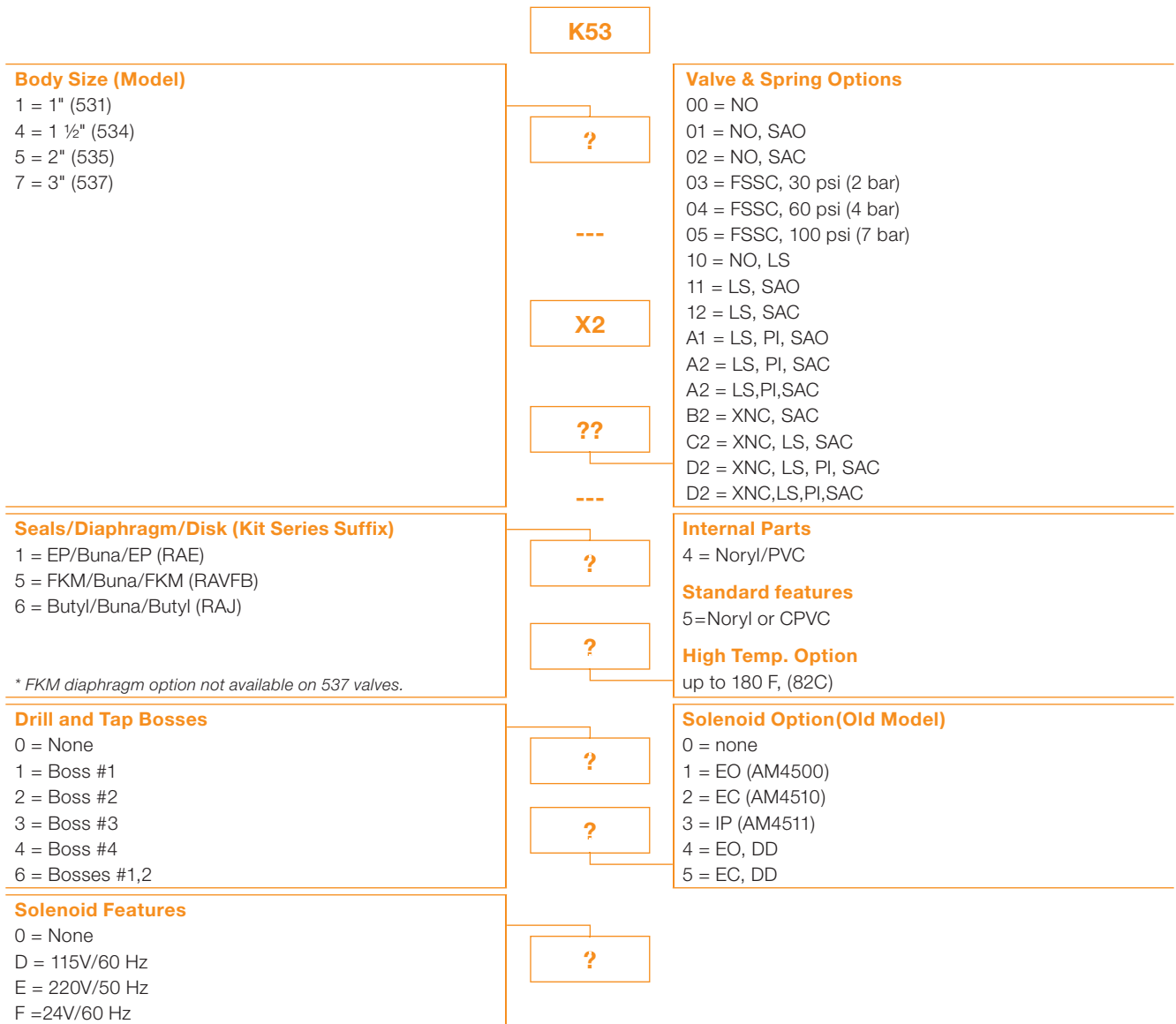
ASTM	American Standard Test and Measurement
JIS	Japanese Industrial Standard
ISO	International Standards Organization
EP	Ethylene Propylene

K53 SERIES

COMPOSITE VALVE NUMBER SELECTION

1" to 3" Basic Valves less Adapters

See page 15 for selecting female socket weld connectors (¾" through 3")



Abbreviations

DD	Dry drain option
EC	Energize to close
EO	Energize to open
EP	Ethylene propylene
FKM	Fluorocarbon
FSSC	Failsafe - spring closed
IP	Independent pressure
LS	Limit Stop option
NEMA	Enclosure standard
NO	Normally open
PI	Position indicator
SAC	Spring assist closed
SAO	Spring assist open
XNC	Externally normally closed

K53 SERIES

COMPOSITE VALVE

1" to 3" Basic Valves less Adapters

See page 19 for selecting female socket weld connectors (¾" through 3")

Prices in Euro

Pipe Sizes in inches	1" (25) 531	1 ½" (40) 534	2" (50) 535	3" (80) 537
Basic Valve, Normally Open, Buna Diaphragm, EP seals LESS Adapters				
List Prices for Options (add to Basic Valve Price)				
Limit Stop ⁽¹⁾				
Limit Stop and Position Indicator ⁽¹⁾				
Externally Normally Closed				
Spring Assist Open or Spring Assist Closed				
Fail Safe Spring Closed, 30, 60 or 100 psi (2, 4 or 7 bar) ⁽¹⁾				
FKM Seals/Buna Diaphragm/FKM Disk				
Butyl Seals/Buna Diaphragm/Butyl Disk				
Internal components for up to 180 °F (82 °C) (Noryl and CPVC)				
3-way Solenoid Valve integrally attached to valve ⁽³⁾				
Dry Drain Option for solenoid valves				
Independent Pressure Option for solenoid valves				
Boss Drilled & Tapped (Price/Boss)	⅛" NPT	⅛" NPT	¼" NPT	¼" NPT

(1) Limit Stop and Fail Safe Spring Closed Options can not be combined. (2) Butyl Seals & Disk Option not available on K535 & K537 Series Valves. (3) Solenoid Option not available on Fail Safe Spring Closed Valves.

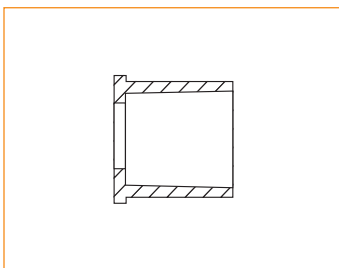
FEMALE SOCKET WELD CONNECTORS

FOR K53 SERIES COMPOSITE VALVES

PVC female socket weld connectors are available in ASTM, ISO or JIS pipe standards. These connectors are designed to have PVC pipe glued directly into them. Connector kits consist of 2 each of the sockets. One kit is needed per valve.

Model Number	Part Number	Kit Description
PVC Female Socket Weld Connector Kits for 531 Valve Body		
K531-577	1070411	¾" ASTM
K531-060	1070412	1" ASTM
K531-061	1070413	25 mm JIS
K531-062	1070414	25 mm ISO
PVC Female Socket Weld Connector Kits for 534 Valve Body		
K534-060	1070419	1 ½" ASTM
K534-061	1070420	40 mm JIS
K534-062	1070421	40 mm ISO
PVC Female Socket Weld Connector Kits for 535 Valve Body		
K535-060	1070425	2" ASTM
K535-061	1070426	50 mm JIS
K535-062	1070427	50 mm ISO
PVC Female Socket Weld Connector Kits for 537 Valve Body		
K537-060	1070431	3" ASTM
K537-061	1070432	75 mm JIS
K537-062	1070433	80 mm ISO

Socket Weld Connector



Abbreviations

ASTM	American Standard Test and Measurements
ISO	International Standards Organization
JIS	Japanese Industrial Standard

48 SERIES

STAGERS MODEL NUMBER SELECTION

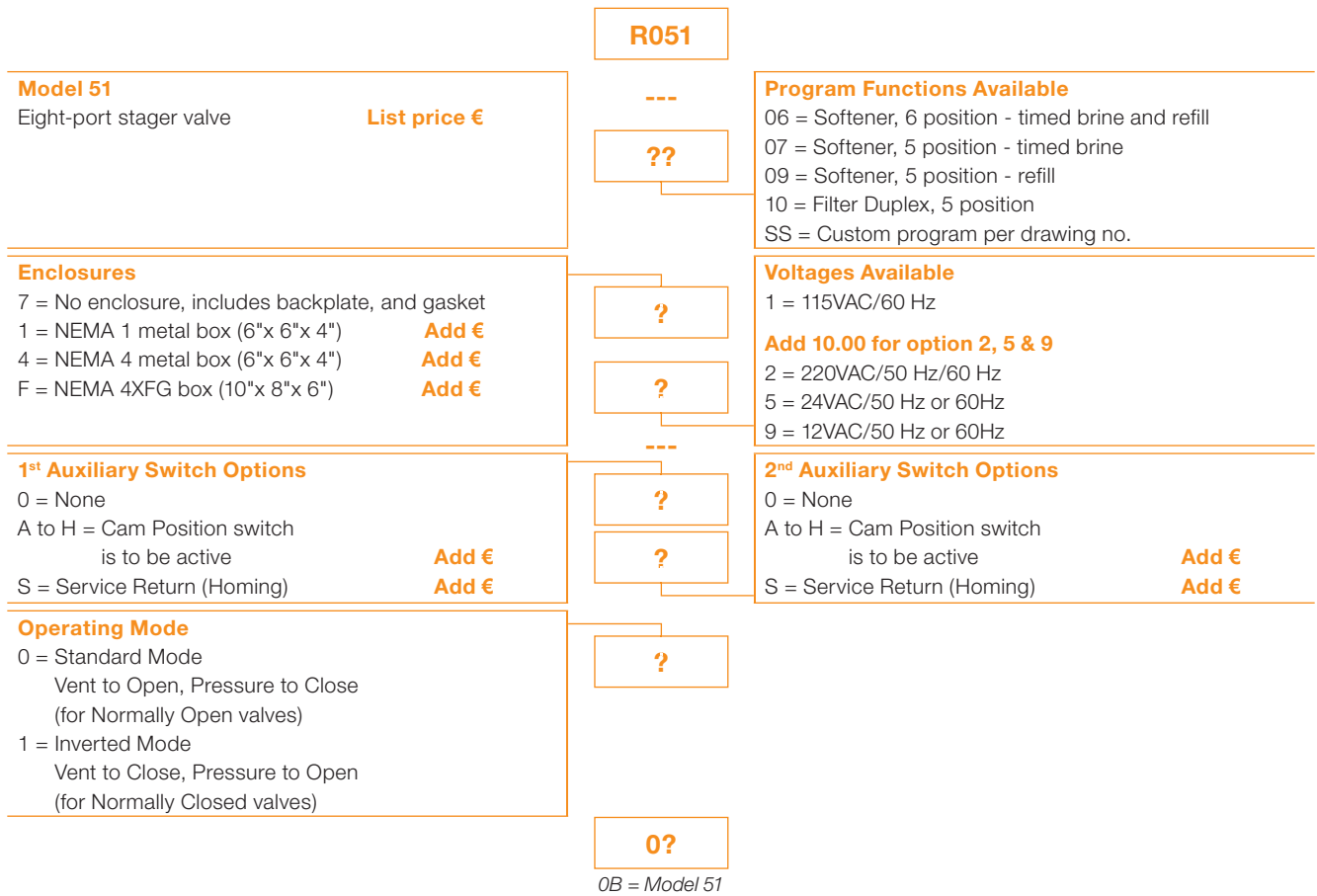
Many custom programs are available. Please contact the Rockford office for availability and list prices of custom programs. Engineering charge for a custom program is a one-time NET fee of € 120.00. Refer to DWG. No 1078031 for other Stager Programs and for Locations Designation for Extra Switch Output.

		R048		
Model 48 Six-port stager valve		---	Program Functions Available 00 = Softener, 4 position 01 = Filter, 3 position 03 = Softener, used only w/Model 450 SS = Custom program per drawing no. TA = Alternating - two units TB = Alternator, used only with Model SB144TA Add €	
List price €		??		
Enclosures 7 = No enclosure, stager mounted on a square backplate only, gasket included for NEMA 4 use 1 = NEMA 1 metal box (6"x 6"x 4") Add € 4 = NEMA 4 metal box (6"x 6"x 4") Add € F = NEMA 4XFG box (10"x 8"x 6") Add €		?	Voltages Available 11 = 115VAC/60 Hz Add 10.00 for option 2, 5 & 9 2 = 220VAC/50 Hz/60 Hz 5 = 24VAC/50 Hz or 60 Hz 9 = 12VAC/50 Hz or 60 Hz	
1st Auxiliary Switch Options 0 = None A to F = Cam Position switch is to be active Add € S = Service Return (Homing) Add € W = Status lights, avail for TA Add €		?	2nd Auxiliary Switch Options 0 = None A to F = Cam Position switch is to be active Add € S = Service Return (Homing) Add €	
Operating Mode 0 = Standard Mode Vent to Open, Pressure to Close (for Normally Open valves) 1 = Inverted Mode Vent to Close, Pressure to Open (for Normally Closed valves)		?		
		0B		

51 SERIES

STAGERS MODEL NUMBER SELECTION

Many custom programs are available. Please contact the Rockford, Illinois office for availability and list prices of custom programs. Engineering charge for a custom program is a one-time NET fee of € 180.00. Refer to DWG. No 1078031 for other Stager Programs and for Locations Designation for Extra Switch Output.



58 SERIES

STAGERS MODEL NUMBER SELECTION & LIST PRICES

Many custom programs are available. Please contact the Rockford, Illinois office for availability and list prices of custom programs. Engineering charge for a custom program is a one-time NET fee of € 250.00. Refer to DWG. No 1078031 for other Stager Programs and for Locations Designation for Extra Switch Output.

<p>Model 58 R058 – 16-port PVC stager</p> <p style="text-align: right;">List price €</p>	R058	<p>Program Functions Available</p> <p>00 = Deionizer 2 Column 03 = Filters, 3-tank sequential 04 = Filters, 4-tank sequential 10 = Deionizer Mixed Bed SS = Custom program per drawing no. TA = 2 Tank Alternating W/light & homing cams Add € TB = 2 Tank Alternating with timed brine, (used with Model E962 only) Add €</p>
<p>Enclosures</p> <p>1 = NEMA 1 metal box (10"x 8"x 4") Add € 4 = NEMA 4 metal box (10"x 8"x 4") Add € 7 = No enclosure, stager mounted on a square backplate only, gasket included for NEMA 4 use F = NEMA 4XFG box (10"x 8"x 6") Add €</p>	---	<p>Voltagages Available</p> <p>1 = 115VAC/60 Hz Add 10.00 for option 2, 5 & 9 2 = 220VAC/50 Hz/60 Hz 5 = 24VAC/60 Hz 9 = 12VAC/50 Hz or 60 Hz</p>
<p>1st Auxiliary Switch Options</p> <p>0 = None A to R = Cam Position switch is to be active Add € S = Service Return (Homing) Add € W = Status lights, used on TA Add €</p>	??	<p>2nd Auxiliary Switch Options</p> <p>A to R = Cam Position switch is to be active Add € S = Service Return (Homing), on TA Add €</p>
<p>Operating Mode</p> <p>0 = Standard Mode Vent to Open, Pressure to Close (for Normally Open valves) 1 = Inverted Mode Vent to Close, Pressure to Open (for Normally Closed valves)</p>	?	
	?	

	?	
	?	
	?	
	0C	

962 SERIES

ELECTRONIC CONTROLLERS MODEL NUMBER SELECTION

The Model 962 is supplied with any of our stager devices in a NEMA 4 fiberglass enclosure. Enclosure dimensions for Model E948 is 10"x12"x8" and 12"x14"x8" for other controllers. All controllers are supplied with homing feature. Standard units can be used with 120 or 220VAC, and 50 or 60 Hz service.

Nomenclature	Part Number	Description	Application
E948-00F1-S000B	1079472	962 Controller with 48-00 Stager, 120V 60Hz	4 Position Softener
E948-00F2-S000B	1079474	962 Controller with 48-00 Stager, 220V 50Hz	
E948-01F1-S000B	1079478	962 Controller with 48-01 Stager, 120V 60Hz	3 Position Filter
E948-01F2-S000B	1079480	962 Controller with 48-01 Stager, 220V 50Hz	
E951-06F1-S000B	1079501	962 Controller with 51-06 Stager, 120V 60Hz	6 Pos. Softener, Timed
E951-06F2-S000B	1079502	962 Controller with 51-06 Stager, 220V 50Hz	Brine & Refill
E951-07F1-S000B	1079509	962 Controller with 51-07 Stager, 120V 60Hz	5 Pos. Softener, Timed
E951-07F2-S000B	1081943	962 Controller with 51-07 Stager, 220V 50Hz	Brine
E951-09F1-S000B	1079513	962 Controller with 51-09 Stager, 120V 60Hz	5 Pos. Softener, Timed
E951-09F2-S000B	1082194	962 Controller with 51-09 Stager, 220V 50Hz	Refill
E951-10F1-S000B	1079516	962 Controller with 51-10 Stager, 120V 60Hz	2 Tank Sequential
E951-10F2-S000B	1079517	962 Controller with 51-10 Stager, 220V 50Hz	Filters
E958-03F1-S000C	1079550	962 Controller with 58-03 Stager, 120V 60Hz	3 Tank Sequential
E958-03F2-S000C	1079552	962 Controller with 58-03 Stager, 220V 50Hz	Filters
E958-04F1-S000C	1079556	962 Controller with 58-04 Stager, 120V 60Hz	4 Tank Sequential
E958-04F2-S000C	1079558	962 Controller with 58-04 Stager, 220V 50Hz	Filters
E958-TAF1-WS00C	1079539	962 Controller with 58-TA Stager, 120V 60Hz	2 Tank Alternating
E958-TAF2-WS00C	1079541	962 Controller with 58-TA Stager, 220V 50Hz	Softeners with 2 Status
E958-TBF1-ST00C	1079543	962 Controller with 58-TB Stager, 120V 60Hz	Lights
E958-TBF2-ST00C	1079547	962 Controller with 58-TB Stager, 220V 50Hz	2 Tank Alternating
E958-SSF1-70686	1076522	962 Controller with 58-SS Stager, 120V 60Hz	Softeners with Timed
E958-SSF2-70686	1084380	962 Controller with 58-SS Stager, 220V 50Hz	Brine, Without Status
			Lights
			2 Tank Alternating
			Softeners with Rinse
			Down & 2 Status Lights

(1) Optional Relay output available (on single units only) - Add € (2) Controllers with other stager programs available, consult factory. (3) PWA Circuit Board and Key Pad Assembly, P/N. 1078458 €

PVC INJECTORS

PVC ejectors, also referred to as eductors, inductors, and injectors, are designed for drawing brine into a softening tank, or for drawing other chemicals for processes such as deionizers. The ejector has no moving parts, and will not corrode because of the PVC construction. Minimum recommended line pressure is 30 psi (2 bar) and maximum temperature is 140 °F (60 °C). Typical draw rate is 3 parts of pressurized supply fluid, usually water, to 2 parts of drawn fluid. PVC ejectors are available in pipe sizes from ½" through 2" with either female NPT or female ASTM socket connections. Specify color code or complete item number when ordering.

Model Number	Part Number	Nozzle Flow Rate at 2,75 Bar inlet Pressure*	Draw rate l/min at 2,75 Bar Inlet Pressure*	Description
Pipe Size ½" NPT				
540-1	1075252	0,74	0,82	INJ. PVC, Noir
540-2	1075253	1		INJ. PVC, Marron
540-3	1070350	1,74		INJ. PVC, Rouge
540-4	1070351	3,5		INJ. PVC, Blanc
540-5	1070352	4,9		INJ. PVC, Bleu
Pipe Size ¾" NPT				
541-1	1070356	6	1,26	INJ. PVC, Rouge
541-2	1070357	10,2		INJ. PVC, Blanc
541-3	1070358	16		INJ. PVC, Bleu
Pipe Size 1" NPT				
542-1	1070362	24,5	0,95	INJ. PVC, Rouge
542-2	1070363	31		INJ. PVC, Blanc
542-3	1070364	45		INJ. PVC, Bleu
Pipe Size 1 ½" NPT				
544-1	1070368	48,4	1,16	INJ. PVC, Rouge
544-2	1070369	74,4		INJ. PVC, Blanc
544-3	1070370	93,4		INJ. PVC, Bleu
544-4	1075310	117		INJ. PVC, Jaune
544-5	1075311	138		INJ. PVC, Orange
Pipe Size 2" NPT				
546-1	1070374	164	1,16	INJ. PVC, Rouge
546-2	1070375	198		INJ. PVC, Blanc
546-3	1070376	216		INJ. PVC, Bleu
546-4	1075327	252		INJ. PVC, Jaune
546-5	1075328	294		INJ. PVC, Orange

3-WAY SOLENOID VALVES

Model Number	Part Number	Description
Pipe Size ⅛" NPT		
C4H470	1070652	Brass NEMA 1 Solenoid 115/60
C4BM1150V	1070648	Brass NEMA 1 Solenoid 220/50
C4BM1150VV	1070649	Brass NEMA 1 Solenoid 24/60
C4BM115012V	1070650	Brass NEMA 1 Solenoid 12VDC
C4BM115024DC	1070651	Brass NEMA 1 Solenoid 24VDC
Pipe Size ¼" NPT		
8320A173	1075634	Brass NEMA 3,7,9 Explosion Proof Solenoid 115/60
8320A173V	1075635	Brass NEMA 3,7,9 Explosion Proof Solenoid 220/50
8360A71	1075637	Plastic NEMA 4, 3-Way Solenoid 115/60
8360A71V	1075638	Plastic NEMA 4, 3-Way Solenoid 220/50
8360A71VV	1075639	Plastic NEMA 4, 3-Way Solenoid 24/60

**Warranty conditions for
Pentair Water Europe products**



WARRANTY CONDITIONS FOR PENTAIR WATER EUROPE PRODUCTS

WARRANTIES AND LIABILITY OF THE SELLER

Introduction

In the present document the name Pentair Water Europe refers to the legal Entities producing, distributing and selling Pentair Water and outsourced products. In general none of the products made by Pentair Water Europe is a finished good meant to be sold directly to consumers. Pentair Water Europe manufactures, distributes and sells components mainly meant to be part of larger equipments, which are sold to commercial partners (i.e. distributors and/or OEMs). Exceptions to the above warranty conditions will be regulated by specific agreements. This warranty supersedes all previous publications.

Warranty Obligations granted by Pentair Water Europe

The products are guaranteed against defects arising from defective materials or workmanship for the following period starting from the day of shipment. Below the main product range manufactured or distributed by Pentair Water Europe. The warranty period refers to the most restrictive case within each product family (the warranty period relevant to each brand is stated in the specific warranty terms of the single brand):

- Valves (FLECK, SIATA): 5 years;
- Electronic boards (FLECK, SIATA): 18 months;
- Motors (FLECK, SIATA): 3 years;
- Valves, electronic boards, motors (AUTOTROL, AQUAMATIC): 5 years EXCEPT Magnum, 172, 180: 3 years & 480 Controllers: 1 year;
- Polyglass pressure vessels, composite pressure vessels, polyester vessels, expansion tanks (STRUCTURAL, WELLMATE): 5 years;
- Vinylester vessels, special vessels, distribution systems, spare parts, aircells (STRUCTURAL, WELLMATE): 2 years;
- Cabinets and brine tanks (PENTAIR PRODUCTS & ACCESSORIES): 2 years;
- Pumps (FLOTEC, NOCCHI, RIVER, SHURFLO): 1 year or more according to the type;
- Swimming pool automatic cleaners (LEGEND, NEW KREEPY KRAULY, E-Z VAC, KREEPY CADET, HOSES, LETRO SWEEP): 2 years or more according to the type;
- Underwater lightings for swimming pools (SAM, SAL, AQUALUMINATOR, AMERLITE, FIBERWORKS): 2 years;
- Swimming pool pumps (CHALLENGER, ULTRAFLOW, WHISPERFLOW, PINNACLE, HYDRONAUT, TRITON JET): 2 years or more according to the type;
- Swimming pool filters (TRITON, TAGELUS, NAUTILUS FNS, FNS PLUS, CLEAN&CLEAR PLUS, AZUR): 2 years or more according to the type;
- Swimming pool automatic sanitizers (AUTOMATIC FEEDER 300/320, COMMERCIAL FEEDER, SALT CHLORINATOR): 2 years or more according to the type;
- Swimming pool heating equipments (MINIMAX HEATPUMP): 2 years;
- Swimming pool controls (COMPOOL, INTELLI TOUCH): 2 years;
- Other filters, cartridges (PENTEK, EVERPURE, GE): 1 year or more according to the type;

Any other Pentair brand or family of product will be guaranteed by Pentair Water Europe no less than what is stated by the EU directive on this subject, by National laws and by commercial habits of Pentair. This warranty is limited to the repair or replacement of the defective parts or to the issue of a credit note for the amount invoiced to the Customers, if judged necessary by the Seller, without any further obligation whatsoever. The goods will be considered as being accepted if no written claim has been made by the Purchaser within 60 days from the receipt of the good. The warranty is granted to the initial Purchaser and will become void when the goods are transferred to a third party. The warranty is only valid provided that the goods are used in accordance with the purpose and with the limits they have been constructed for and proposed by the Seller to the Purchaser. The warranty is valid only if the goods are provided with their original label of identification with which they were shipped from Pentair locations. Should this not be available (removed, illegible) any arrangement will have to be discussed and agreed with your Pentair correspondent. Any irregular use of the goods will automatically cause the warranty to become void (as a partial and not complete example of the above one can state improper repackaging, improper shipping, misapplication, misuse, abuse, negligence, accidental damage, fire, acts of God or other circumstances outside the control of Pentair Water Europe). The Purchaser commits himself to take properly care of the goods, to respect the maintenance, to follow the guidelines of the Seller and to inform the Seller immediately of any defective part or any damage. In case of litigation, the applicable law as well as the competent Court will be the one of the Country where sits the Pentair Water Europe Company which has supplied the goods.

Warranties or Representations by Others

No dealer or other person has any authority to make any different warranties or representations concerning Pentair Water Europe Products. Accordingly, Pentair Water Europe nor any of its entities are to be held responsible for any such warranties or representation.

Return of the goods

No goods may be forwarded back to the Seller without the prior written authorization by the latter, so called **Return Material Authorization (RMA)**. This authorization does not imply any liability, whether direct or indirect, apparent or hidden, of the Seller and does not suspend in any event the payment owed by the Purchaser at the date they are due. Upon receipt of the written authorization by the Seller specifying also the address to which the defective item/s may be shipped, the Purchaser will send the item/s to the address indicated together with a copy of the RMA received by Pentair Water Europe. This need to be applied externally on the box or supplied with the shipping documents. In case of requests of RMA for returns of new, non defective material due to mistakes of Pentair Water Europe or of the Purchaser the RMA will have to be asked within 60 days from the receipt of the good and sent back within 30 days from the receipt of the RMA. In case of requests of RMA for returns of defective material (under or out of warranty) the RMA can be asked at any time and the item/s returned within 30 days as previously stated.

Freight costs

In case of new material to be returned to Pentair because of Customer's mistake, freight costs will be at customer's expense. In case of new material to be returned to Pentair because of Pentair's mistake, freight costs will be at Pentair's expense. In case of defective material under warranty to be returned to Pentair, freight costs will be at Pentair's expense both ways. In case of defective material out of warranty to be returned to Pentair, freight costs will be at Customer's expense both ways.

Other rights

This warranty gives you specific legal rights as above described. In addition, consumer's rights are protected where applicable, following European Directives or, in absence of, National laws.

GEWÄHRLEISTUNGSBEDINGUNGEN FÜR PENTAIR WATER EUROPE PRODUKTE

GEWÄHRLEISTUNGSVERPFLICHTUNG DES VERKÄUFERS

Einleitung

Im vorliegenden Schriftstück bezieht sich der Name Pentair Water Europe zur Pentair Water Europe Gruppe gehörenden Unternehmen, die Pentair Water-Erzeugnisse sowie im Rahmen von Outsourcing hergestellte Produkte fertigen, vertreiben und verkaufen. Pentair Water Europe-Produkte sind generell keine fertigen Erzeugnisse, die für den Verkauf an den Endverbraucher gedacht sind. Pentair Water Europe fertigt, vertreibt und verkauft grundsätzlich Komponenten für den Einbau in Größere Systeme oder Anlagen, die an Handelspartner verkauft werden [wie z. B. Vertriebspartner und/oder OEM (Originalhersteller)]. Eventuelle Ausnahmen von den obigen Gewährleistungsbedingungen werden durch gesonderte Vereinbarungen geregelt. Diese Gewährleistungsbedingungen ersetzen – soweit zulässig – die gesetzlichen Regelungen sowie alle vorausgegangenen Gewährleistungs- /oder Garantiebedingungen von Pentair Water Europe.

Gewährleistung von Pentair Water Europe

Im Fall von Material- oder Verarbeitungsfehlern gilt für alle Produkte eine Gewährleistung von unten aufgeführter Dauer, welche mit dem Versandtag beginnt. Es folgt eine Aufstellung der wichtigsten Produkte, die von Pentair Water Europe gefertigt und vertrieben werden. Die angegebene Gewährleistungszeit gibt die kürzeste Verjährung innerhalb der jeweiligen Produktfamilie an (die genaue Gewährleistungszeit jeder Marke ist in den gesonderten Gewährleistungsbedingungen der betreffenden Marke aufgeführt):

- Ventile (FLECK, SIATA): 5 Jahre;
- Schaltschränke (FLECK, SIATA): 18 Monate;
- Motoren (FLECK, SIATA): 3 Jahre;
- Ventile, Schaltschränke, Motoren (AUTOTROL, AQUAMATIC): 5 Jahre AUSSER Magnum, 172, 180: 3 Jahre & 480 Steuerungen: 1 Jahr;
- Druckbehälter aus Polyglass, Verbund-Druckbehälter, Behälter aus Polyester, Expansionstanks (STRUCTURAL, WELLMATE): 5 Jahre;
- Vinylester-Behälter, Spezialbehälter, Verteilersysteme, Ersatzteile, Luftzelle (STRUCTURAL, WELLMATE): 2 Jahre;
- Boxen und Solebecken (EUROIMPEX): 2 Jahre;
- Pumpen (FLOTEC, NOCCHI, RIVER, SHURFLO): 1 Jahr oder mehr, je nach Typ;
- Automatischer Schwimmbadreiniger (LEGEND, NEW KREEPY KRAULY, E-Z VAC, KREEPY CADET, HOSES, LETRO SWEEP): 2 Jahre oder mehr, je nach Typ;
- Unterwasserbeleuchtung für Schwimmbäder (SAM, SAL, AQUALUMINATOR, AMERLITE, FIBERWORKS): 2 Jahre;
- Schwimmbadpumpen (CHALLENGER, ULTRAFLOW, WHISPERFLOW, PINNACLE, HYDRAINAUT, TRITON JET): 2 Jahre oder mehr, je nach Typ;
- Schwimmbadfilter (TRITON, TAGELUS, NAUTILUS FNS, FNS PLUS, CLEAN&CLEAR PLUS, AZUR): 2 Jahre oder mehr, je nach Typ;
- Automatische Desinfektionssysteme für Schwimmbäder (AUTOMATISCHER CHLORDOSIERER 300/320, GROSSER CHLORDOSIERAUTOMAT, ANLAGEN ZUR ELEKTROLYTISCHEN CHLORPRODUKTION): 2 Jahre oder mehr, je nach Typ;
- Schwimmbadheizsysteme (POMPA DI CALORE MINIMAX): 2 Jahre;
- Schwimmbadsteuerungen (COMPOOL, INTELLI TOUCH): 2 Jahre;
- Sonstige Filter, Patronen (PENTEK, EVERPURE, GE): 1 Jahr oder mehr, je nach Typ.

Für jede sonstige Pentair-Marke oder -Produktfamilie besteht eine Gewährleistung mindestens im Rahmen der geltenden EU-Richtlinie, der nationalen Gesetzgebung sowie den kaufmännischen Gepflogenheiten des Hauses Pentair. Diese Gewährleistung beschränkt sich nach Wahl von Pentair Water Europe auf die Reparatur oder den Austausch der defekten Teile bzw. auf die Ausstellung einer Gutschriftanzeige für den dem Kunden berechneten Betrag. Darüber hinausgehende Verpflichtungen von Pentair Water Europe bestehen nicht. Die Ware wird als abgenommen betrachtet, sofern der Käufer nicht innerhalb von 60 Tagen nach Wareneingang eine schriftliche Beanstandung absendet. Die Gewährleistung gilt nur gegenüber dem ursprünglichen Käufer und verfällt bei Weitergabe der Ware an Dritte. Die Gewährleistung gilt nur unter der Voraussetzung, dass die Ware bestimmungsgemäß sowie innerhalb der Grenzen verwendet wird, für welche sie hergestellt und dem Käufer vom Verkäufer angeboten wurde. Die Gewährleistung ist nur gültig, wenn die Ware mit dem Original-Kennzeichnungsetikett geliefert wird, mit dem sie von Pentair Water Europe aus versandt wurde. In Ermangelung dieses Etiketts (falls entfernt oder unleserlich) sind mit dem Pentair-Partner gesonderte Vereinbarungen zu treffen. Jede unsachgemäße Verwendung der Ware führt zum Ausschluß der Gewährleistung (neben weiteren Beispielen gehören hierzu unter anderem: unangemessene Wiederverpackung, ungeeigneter Versand, falsche Anwendung, unsachgemäße Verwendung, Missbrauch, Nachlässigkeit, fahrlässige Beschädigung, Brand, höhere Gewalt oder sonstige Umstände, die sich der Kontrolle von Pentair Water Europe entziehen). Der Käufer verpflichtet sich, die Ware sachgemäß zu behandeln, die Wartungshinweise zu beachten, die Anweisungen des Verkäufers zu befolgen und Letzteren unverzüglich über jeden etwaigen Defekt oder Schaden zu informieren. Im Fall eines Rechtsstreits gelten anwendbares Recht und zuständiger Gerichtsstand des Landes, in welchem die Pentair Water Europe-Filiale ansässig ist, welche die Ware geliefert hat.

Gewährleistungen oder Erklärungen Dritter

Händler oder sonstige Person sind nicht befugt, mit Bezug auf die Pentair Water Europe-Produkte anders lautende Garantien oder Gewährleistungen auszusprechen oder anderweitige Erklärungen abzugeben. Weder Pentair Water Europe noch irgendeine ihrer verbundenen Gesellschaften haften für derartige anders lautenden Erklärungen.

Warenrücksendung

Warenrücksendungen an den Verkäufer sind nur nach schriftlicher Einwilligung desselben gestattet, welche im Zuge einer sogenannten **Materialrücksendungsgenehmigung (RMA: Return Material Authorization)** erfolgen muss. Besagte Genehmigung bedeutet keine Anerkennung eines Gewährleistungsanspruches – weder direkt noch indirekt, weder scheinbar noch verborgen – seitens des Verkäufers und berechtigt den Käufer nicht zur Aussetzung seiner Zahlungsverpflichtungen. Die, bisherige Fälligkeit bleibt weiterhin bestehen. Bei Erhalt der schriftlichen Genehmigung des Verkäufers, die auch die Lieferanschrift für die Rücksendung des oder der defekten Produkte enthält, verschickt der Käufer die betreffenden Produkte an die angegebene Adresse und fügt der Sendung eine Kopie der von Pentair Water Europe erhaltenen RMA bei. Dieses Schriftstück muss außen am Karton angebracht oder zusammen mit den Versandpapieren geliefert werden. RMA-Anfragen für die Rücksendung von neuem, nicht defektem Material aufgrund von Fehlern seitens Pentair Water Europe oder des Käufers sind innerhalb von 60 Tagen nach Warenerhalt einzureichen; die Warenrücksendung muss innerhalb von 30 Tagen nach Eingang der RMA stattfinden. RMA-Anfragen für die Rücksendung von defektem Material (inner- oder außerhalb der Garantie) können jederzeit eingereicht werden; der/die Produkte sind wie oben festgehalten innerhalb von 30 Tagen zurückzusenden.

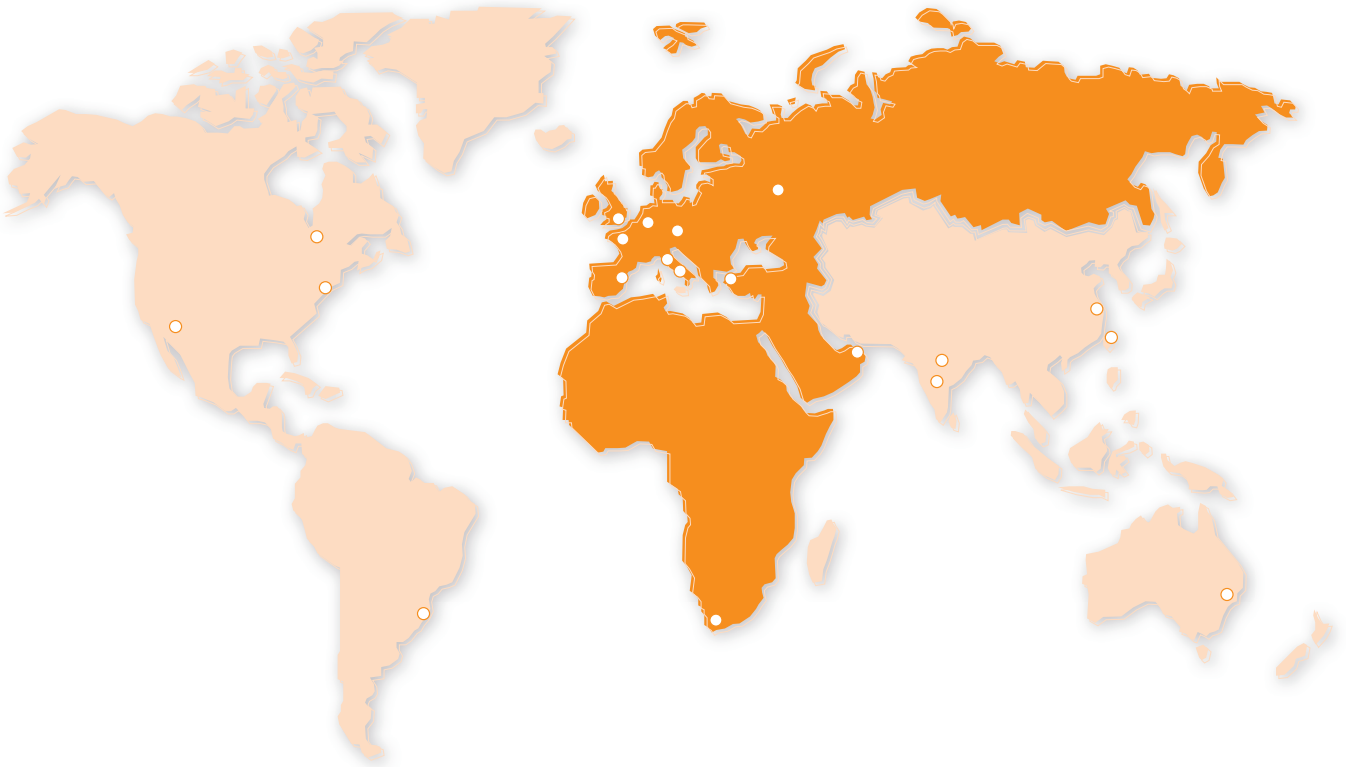
Versandkosten

Im Fall einer auf Irrtümer des Kunden zurückzuführenden Rücksendung neuer Materialien an Pentair gehen die Versandkosten zu Lasten des Kunden. Im Fall einer auf Irrtümer seitens Pentair zurückzuführenden Rücksendung neuer Materialien an Pentair gehen die Versandkosten zu Lasten von Pentair. Im Fall einer Rücksendung defekter, von der Gewährleistung erfasster Materialien an Pentair gehen die Versandkosten auf dem Hin- und Rückweg zu Lasten von Pentair. Im Fall einer Rücksendung defekter, nicht von der Gewährleistung erfasster Materialien an Pentair gehen die Versandkosten auf dem Hin- und Rückweg zu Lasten des Kunden.

Sonstige Rechte

Diese Garantie gewährt dem Verbraucher die oben beschriebenen, spezifischen gesetzlichen Rechte. Die Rechte des Verbrauchers unterliegen in den anwendbaren Fällen zudem dem Schutz der europäischen Richtlinien sowie in deren Ermangelung der nationaler Gesetzgebung.

Pentair Water in Europe



Pentair Water Belgium n.v.

Pentair Water Italy S.r.l.

Pentair Water in Spain

Pentair Water France SAS

Pentair Water Middle-East

Pentair Water in Turkey

Pentair Water in Germany

Pentair Water in Russia

Pentair Water in UK

Pentair Water South Africa Pty, Ltd.

Information

TRETMAN I OBRADA VODA

Voda za piće / Tehnološke vode / Procesne vode / Vode za farmaciju / Otpadne vode / Bazenske vode

KONZALTING

Comissioning - sustava / Comissioning - opreme / Optimalizacije / Praćenje razvoja projekta / Critical solution

INŽENJERING

Procesni projekti / Tehnološki projekti / Izrada idejnih rješenja / Izrada elaborata - zaštita na radu - zaštita okoliša QA i QC planovi

USLUGE

Proizvodnja / Montaža / Puštanje u rad / Servis / Rezervni dijelovi / Održavanje-Outsourcing / Osposobljavanje osoblja



CLEAN WATER GROUP

CWG d.o.o.

Buzinski prilaz 21 · 10010 Zagreb

tel: +385 1 6608 807

tel: +385 1 5601 117

fax: +385 1 6608 809

info@cwg.hr

www.cwg.hr